



# **Emergency Evacuation Plan and Implementation Guidelines**

## **The Pennsylvania State University**

**NOLL LAB**

**March 2015**

# Table of Contents

Introduction

Implementation Guidelines and Instructions

## **Evacuation Plan**

**Section I:** Building and Personnel Information

**Section II:** Emergency Phone Numbers

**Section III:** Purpose and Objectives

**Section IV:** General Guidelines

**Section V:** Responsibilities of Building/Department Emergency Coordinator and Safety Monitors

**Section VI:** Alerting or Signaling Building Occupants in Case of Fire or Other Emergency

**Section VII:** Evacuation Procedures for Building Occupants

**Section VIII:** Disabled Occupants

**Section IX:** Critical Operations Shutdown

**Section X:** Accountability Procedures for Emergency Evacuation

**Section XI:** Rescue and Medical Duties

**Section XII:** Training and Communications

## **Appendix I:**

1. Critical Operations Shut Down Procedures and Personnel Assigned These Responsibilities
2. Work Unit Employee Lists
3. Listing of Individuals Requiring Evacuation Assistance

## **Appendix II:**

Building Evacuation Floor Plan

## **Appendix III:**

Evacuation Quick Reference Card

## **Introduction**

Penn State University's Emergency Evacuation Plan has been designed to assist facility personnel in the creation of a system for protection of life and property in the event of a fire, explosion, spill or other emergency requiring building evacuation. This plan is designed as a template for customization and may be used by work units who are required by regulations to have such a plan. It is recommended that all university buildings that are normally occupied have an Emergency Evacuation Plan. **Note that the bracketed bold parts of the plan need to be customized.**

## **Implementation Guidelines and Instructions**

In coordination with the unit Safety Officer, the Budget Executives and Budget Administrators shall designate a Building/Department Emergency Coordinator and Alternate Building/Department Emergency Coordinator for the facility.

The Building/Department Emergency Coordinator, in coordination with the unit safety officer shall:

- Customize the text and appendices of the plan to your facility.
- Be responsible for plan custody, storage and annual review and update.
- Ensure that training is provided for all building occupants.

The alternate Building/Department Emergency Coordinator must be prepared to assume all the duties of the Building/Department Emergency Coordinator in the event he/she is unavailable.

The specific instructions below are provided to assist in the completion of the following sections of this plan. (Sections of this plan that are self-explanatory are not listed below.)

EHS will provide training in overall plan development. Contact Steve Triebold at 814-865-6391 or via e-mail at sgt4@psu.edu, if you have any questions concerning the plan or would like assistance.

## **Section I - Building and Personnel Information**

- For the building name, include the University-assigned name, and the common use name, if different.
- List all department(s) included in this building and plan.
- Designate Safety Monitors for specific work areas in the facility. Consideration on the appropriate number of safety monitors shall be based on employee numbers and area configuration. As an example, separate Safety Monitors may be appropriate for each floor of a building.

- Include the name of the work unit safety officer(s), and alternate(s). Refer to the following URL for a list of Safety Officers.

**[http://www.ehs.psu.edu/help/univ\\_safety\\_council.cfm](http://www.ehs.psu.edu/help/univ_safety_council.cfm)**

- Refer to instructions for Appendix II on how to select the Designated Meeting Site(s) and the Assisted Evacuation Staging Area(s).
- Specify location(s) where this Plan will be maintained for access to employees. This may include physical locations as well as electronic sites.

## **Section VI – Alerting or Signaling Building Occupants in Case of Fire or Other Emergency**

- The type of evacuation alarm used within your facility may vary. You will need to identify the type(s) used, as examples, bells, horns, strobes or voice. Contact your Facilities Coordinator or EHS (814-865-6391) for help in determining the type of alarm.

## **Section VIII – Disabled Occupants**

- Review University Safety Policy SY02 to determine participation in the program for individuals requiring assistance during an evacuation.
- Complete the Listing of Individuals Requiring Evacuation Assistance in Appendix I.

## **Section IX – Critical Operations Shutdown**

- Review your operations to determine which critical operating systems may require continuing attention or shutdown during an evacuation or other emergency condition. Certain equipment and processes must be shutdown in stages or over time. Examples of this might be laboratory experiments, processes or equipment that if left unattended would create an additional hazard (such as fryers), etc. In addition, certain equipment or facilities (such as safes) may need to be secured prior to evacuating. Develop a procedure to ensure that requisite actions are taken during an emergency to prevent additional hazards/worsening conditions or to maintain proper security. Ensure that you have designated personnel to address these issues, provided them with the procedure, and trained them in its use.
- Complete the Critical Operations Shut Down Procedures and Personnel Assigned these Responsibilities in Appendix I.

## **Section X: Accountability Procedures for Emergency Evacuation**

- Provide a listing of employees assigned to the work unit or building implementing this plan, included in Appendix I. This listing is used to account for employees evacuating the building and should be divided by each Safety Monitor's area of coverage.

## **Appendix II – Building Evacuation Floor Plan**

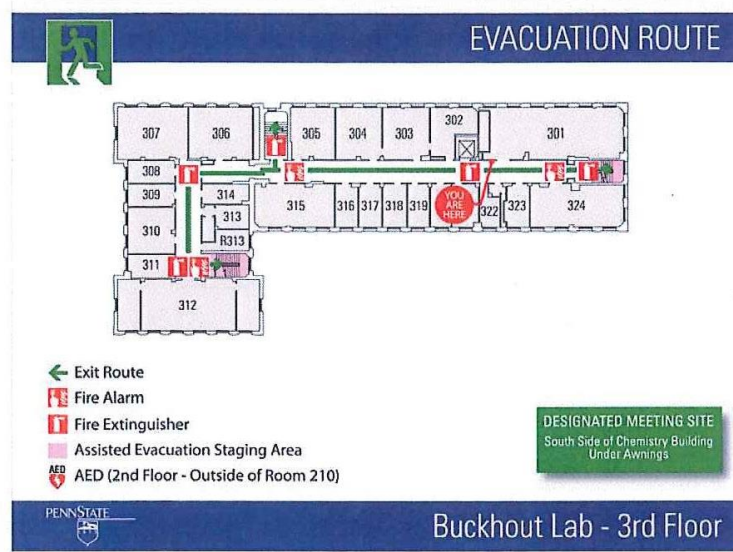
To prepare a Building Evacuation Floor Plan:

- Obtain floor plan(s) of building from the Building Facility Coordinator to use as a base plan. Building floor plans can be downloaded from the OPP FIS website <https://www.facilities.psu.edu/FISWebSite/index.jsp>
- Note on the floor plan:
  - Primary and secondary routes of exit
    - Identify the two closest exits to the work area
    - Clearly mark these routes
  - Designated Meeting Site
    - This should be a safe location outside of the building that is away from building exits, entrances and areas where emergency response vehicles may travel. The site should be a location that emergency responders can easily locate.
  - Exit locations
  - Fire alarm pull station locations
  - Portable fire extinguisher locations
  - Automated External Defibrillator (AED) location
  - Assisted Evacuation Staging Areas for disabled Occupants
    - These are areas within the building for use in assisting with the evacuation of disabled occupants. Stairway floor landings should be used for this purpose if the landing is large enough for a wheel chair and still allow the use of stairs by other occupants. If stairway landings cannot be used, a location close to the stairway which has a window and phone should be used.

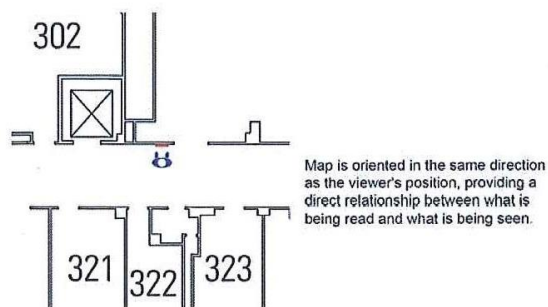
- Note on the floor plan where each map is intended to be mounted. This is a critical step in assuring proper orientation of map graphics.
- Submit marked-up floor plan to EH&S for review. Once approved, a final map can be created and installed. To insure that legibility and location objectives are met, the approved draft evacuation floor plan will be converted to a standardized graphic format and wall mount. The Division of Campus Planning and Design in the Office of Physical Plant is responsible for creating and fabricating the maps.
- Copies of the completed maps will be sent to Building Emergency Coordinators and Safety Officers for inclusion in the written Building Evacuation Plan.

### Format and Location Guidelines

Example below illustrates format of a typical Building Evacuation Floor Plan. Draft plan prepared by Unit safety representatives will be converted to this format and a wall mountable final product will be produced. Wall mounted maps should be located on all floors in corridors and areas where exits are not readily visible as well as elevator lobbies.



Sample Map



# The Pennsylvania State University

## Emergency Evacuation Plan

### Section I: Building and Personnel Information

Building Name: **Noll Lab**  
 Department Name(s): **Department of Kinesiology (Kines)**  
**Center for Childhood Obesity Research (CCOR)**  
**Clinical Research Center (CRC)**

<b>Position</b>	<b>Name</b>	<b>Area of Responsibility</b>	<b>Phone Office/Cell</b>	<b>Office Address</b>
Building/Department Emergency Coord.	Randy McCullough	NA	814-865-0289	1A Noll Lab
Alternate Building/Department Emergency Coord.	Dennis Ripka	NA	814-863-9263	1B Noll Lab
Unit Safety Officer	Marianne Kuhns	CHHD	814-865-1426	341 HHD
Unit Alternate Safety Officer	Jamie Shade	CHHD	814-867-4853	338 HHD
Safety Monitors	Randy McCullough (Alt. Denny Ripka)	Kines – 1 <sup>st</sup> Floor Kines Faculty & Grad Offices	814-865-0289 (Alt.: 863-9263)	1A Noll Lab (Alt. 1B Noll)
	Ellen Bingham (Alt. Lacy Alexander)	Kines – 1 <sup>st</sup> Floor Elmore Wing	814-865-4456 (Alt.: 867-1781)	116 Noll Lab (Alt. 113 Noll)
	Sue Slimak (Alt. Jane Pierzga)	Kines – 2 <sup>nd</sup> Floor	814-863-8556 (Alt.: 865-1236)	228 Noll Lab (Alt. 224B Noll)
	Joy Reid (Alt. Michele Marini)	CCOR – 1 <sup>st</sup> Floor	814-865-5246 (Alt.: 863-0607)	128 Noll Lab (Alt. 129 Noll)
	Tracey Allen (Alt. Cyndi Flanagan)	CRC – 2 <sup>nd</sup> Floor Elmore Wing	814-865-5811 (Alt.: 865-7103)	211 Noll Lab (Alt. 211 Noll)

Designated Meeting Site(s) for Building are:

**Grass area adjacent to the IST Building on the corner of Pollock and Burrowes Roads.**

Designated Assisted Evacuation Staging Areas for the Building are:

**Stairwells Z201 and Z202 on either end of the north side of the building.**

Copies of this Evacuation Plan are kept in the following locations:

**Offices of the Building Emergency Coordinator, Alternate Building Emergency Coordinator, Safety Monitors, Department of Kinesiology Administrative Support Coordinator, Noll Lab Mailroom bulletin board.**

*Cheryl Markley*

Signature of Plan Preparer

March 31, 2015

Date Prepared

## **Section II: Emergency Phone Numbers**

### **EMERGENCY (Police-Fire-Ambulance) 911**

University Police 814-863-1111

University Health Services 814-865-6556

Environmental Health and Safety (814) 865-6391

Physical Plant Work Reception Center 814-865-4731

## **Section III: Purpose and Objectives**

Potential emergencies such as fire, explosion, spill, chemical releases and all other emergencies may require employees to evacuate the building. An Emergency Evacuation Plan and adequate occupant familiarity with a building minimize threats to life and property. This Emergency Evacuation Plan is intended to communicate the policies and procedures for employees to follow in an emergency situation. This written plan should be made available, upon request, to employees and their designated representatives by the Building/Department Emergency Coordinator or the Unit Safety Officer for the building.

## **Section IV: General Guidelines**

The following guidelines apply to this Emergency Evacuation Plan:

- Stairwells are the primary means for evacuation. Elevators are to be used only when authorized by a fire or police officer.
- No employee is permitted to re-enter the building until advised by the Fire Department, PSU Police or EHS Representative.
- This Emergency Evacuation Plan will be coordinated with efforts in multiple-use buildings. Mutually beneficial agreements can be reached regarding Designated Meeting Sites and shelter in the event of inclement weather.



## **Section V: Responsibilities of Safety Officer, Building/Department Emergency Coordinator and Safety Monitors**

The Unit Safety Officer is responsible for:

1. Annually insure plans are reviewed and updated as needed.
2. Provide written confirmation to EH&S that plans have been updated and in compliance with all requirements.
3. Appoint Building / Department Emergency Coordinators in coordination with Administrative Unit Leaders.
4. Designate Safety Monitors and in coordination with Building / Department Emergency Coordinators,

The Building/Department Emergency Coordinator is responsible for:

1. In conjunction with the unit Safety Officer, designating Safety Monitors and alternate Safety Monitors for specific work areas in the facility.
2. Overseeing the development, communication, implementation and maintenance of the Emergency Evacuation Plan.
3. Ensuring that floor plans and route evacuation maps are posted.
4. Ensuring the training of building occupants, Safety Monitors, and Critical Operations Personnel, and notifying all personnel of changes to the plan.
5. Maintaining up to date lists of building occupants for each Safety Monitor's area of coverage, Critical Operations Personnel, Listing of Individuals requiring Evacuation Assistance and any other personnel with assigned duties under this plan. Lists are included in Appendix I.
6. In the event of a fire or other emergency, relaying applicable information to emergency personnel, occupants and Safety Monitors.

The Safety Monitors are responsible for:

1. Familiarizing personnel with emergency procedures.
2. Acting as liaison between management and their work area.
3. Knowing where their Designated Meeting Site is and for communicating this information to occupants.
4. Ensuring that disabled persons and visitors are assisted in evacuating the building or moved to a predetermined staging area (Assisted Evacuation Staging Area).
5. Performing responsibilities to ensure that all persons are accounted for during an evacuation as identified in Section X.
6. Evaluating and reporting problems to the Building/Department Emergency Coordinator after an emergency event.
7. Posting the "Building Evacuation Floor Plan" (Appendix II) in their work areas, communicating plan to occupants, and updating the plan annually.

## Section VI: Alerting or Signaling Building Occupants in Case of Fire or Other Emergency

1. In case of a fire, employees should actuate the nearest fire alarm pull station and/or make a telephone call to 911. The locations of the fire alarm pull stations are noted on the Building Evacuation Floor Plans in Appendix II. The **Audible Alarm/Clanging Bells** alarm alerts building occupants of the need for evacuation and sends a signal to the PSU Police Dispatch Center that there is an alarm condition in the building.
2. It may be necessary to activate additional fire alarm pull stations, or verbally announce the alarm, if people are still in the building and the alarm has stopped sounding, or if the alarm does not sound. This should be done while exiting the building.
3. Persons discovering a **fire, smoky condition, or explosion** should pull the nearest fire alarm pull station. Any pertinent fire or rescue information should be conveyed to 911. All emergency telephone numbers are listed at the beginning of this Emergency Evacuation Plan.
4. To report all emergencies, employees should call 911. State your name, your location, and the nature of the call. Speak slowly and clearly. Wait for the dispatcher to hang up first. On occasion the dispatcher may need additional information or may provide you with additional instructions. Make this call from a safe location.

## Section VII: Evacuation Procedures for Building Occupants

1. When the fire alarm sounds, occupants should ensure that nearby personnel are aware of the emergency, quickly shutdown operating equipment (e.g., compressed gas cylinders), close doors (DO NOT LOCK) and exit the building using the established evacuation routes.
2. Occupants shall assist visitors, students and others who are not familiar with the plan to safely evacuate.
3. If you have been identified as having responsibility for Critical Operations Shutdown, refer to Section IX.
4. All occupants should proceed to their Designated Meeting Site and await further instructions from their Safety Monitor.
5. All personnel should know where primary and alternate exits are located, and be familiar with the various evacuation routes available. Floor plans with escape routes, alternate escape routes, exit locations and Designated Meeting Sites are located in Appendix II and are posted in the building.
6. Building occupants must NOT use elevators as an escape route in the event of a fire.
- 7.

### Notes and Precautions:

- Portable fire extinguishers can be used for small fires. However, an immediate readiness to evacuate is essential.
- Never enter a room that is smoke filled.

- Before opening doors check to ensure it is not hot to the touch. If hot do not open. If warm open slowly to check room / hallway conditions.

## **Section VIII: Disabled Occupants**

Employees requiring assistance upon exiting are listed in Appendix I however there may be disabled visitors in the building that also require assistance. The Safety Monitor must identify individuals needing assistance, attempt to locate individuals to assist in the evacuation or in relocating to the Assisted Evacuation Staging Areas, and notify the emergency response personnel of the person's location. Transporting of disabled individuals up or down stairwells should be avoided until emergency response personnel have arrived. Unless imminent life-threatening conditions exist in the immediate area occupied by a non-ambulatory or disabled person, relocation of the individual should be limited to a safe area on the same floor, in close proximity to an evacuation stairwell. Within the room there should be provided a flashlight, towel for hanging out window or bright colored marker to mark windows that cannot be opened.

Penn State University Safety Policy SY02 “Handicapped Identification Decals for Individuals Requesting Assistance” is a voluntary procedure to provide visual identification of an employees work area for emergency responders and to provide PSU Police with information for prompt evacuation assistance.

## **Section IX: Critical Operations Shutdown**

Critical Operation Shutdown: Critical operations, including equipment that must be shut off and persons designated to complete these actions are identified in Appendix I. Procedures for rapid shutdown should be predetermined for life safety and loss control purposes, as well as ensuring complete evacuations in a timely manner. Individuals should never jeopardize their own health and safety to complete the Critical Operations Shutdown.

## **Section X: Accountability Procedures for Emergency Evacuation**

Once each evacuated group of employees has reached their Designated Meeting Site, each Safety Monitor shall:

1. Take head count of his or her group using the building occupant list for those employees in their area of coverage
2. Assume the role of department contact to answer questions
3. Instruct personnel to remain in area until further notice
4. Report status to Building/Department Emergency Coordinator or Incident Commander including persons who are located in the Assisted Evacuation Staging Area or have remained behind for Critical Operations Shutdown.

## **Section XI: Rescue and Medical Duties**

The Fire Department and University Police will conduct all rescue and medical duties and/or will coordinate with Emergency Medical Services.

## **Section XII: Training and Communications**

The Building/Department Emergency Coordinator is responsible to ensure that all personnel are trained in safe evacuation procedures. Refresher training is required whenever the employee's responsibilities or designated actions under the plan change, and whenever the plan itself is changed.

The training shall include:

- The plan's purpose,
- Preferred means of reporting fires and other emergencies,
- The type of building alarm system,
- Emergency evacuation procedures and route assignments, including procedures for those unable to evacuate themselves,
- Procedures to be followed by employees who remain to control Critical Operations Shutdown before they evacuate,
- Procedures to account for all employees after emergency evacuation has been completed, and
- Who performs rescue and medical duties
- The training shall include use of the floor plans and evacuation routes given in Appendix II of the Emergency Evacuation Plan.

Training on the Emergency Evacuation Plan can be performed during events such as work unit new employee orientation, employee briefings, discussions at faculty/staff meetings, internal work unit newsletters and emails, etc.

It is suggested that drills be conducted annually. EHS is available to assist with tools for training building occupants in the Emergency Evacuation Plan as well as evacuation drills.

Work units may also choose to provide Evacuation Quick Reference Cards for employees. These cards provide essential information on emergency contacts and designated meeting sites. A sample card is provided in Appendix III and can be customized as needed.

# Appendix I

## 1. Critical Operations Shut Down Procedures and Personnel Assigned These Responsibilities

After safely evacuating, the **Building Emergency Coordinator** (or Alternate) shall:

- Contact Kinesiology Department (814-863-8067) for list of employees assigned to the building at the time of the emergency (if any).
- Work with Safety Monitors to account for employees in the building.
- Report in to **Emergency Responders** of anyone unaccounted for and anyone needing assistance evacuating the building.

## 2. Work Unit Employee Lists – **See attached for employee lists.**

**Provide the following information for each Safety Monitor:**

- Occupant Name
- Work Area

## 3. Listing of Individuals Requiring Evacuation Assistance

**Provide the following information:**

- Name
- Work Area
- Special Needs/Concerns

**CONFIDENTIAL**

Printed 3/31/2015

**Noll Lab - Kinesiology Emergency Evacuation List**

<b>Alba, Billie</b> Safety Monitor/Alt: Slimak/Pierzga	GA Office Ph	Graduate Student 229 Noll Lab 814-863-8557	Accounted For <input type="checkbox"/>
<b>Alexander, Lacy A.</b> Safety Monitor/Alt: Bingham/Alexander	FT1 Office Ph	Assoc Research Prof 113 Noll Lab 814-867-1781	Accounted For <input type="checkbox"/>
<b>Allaway, Heather</b> Safety Monitor/Alt: Slimak/Pierzga		Grad Student (Physio) 206 Noll Lab 814-867-2510	Accounted For <input type="checkbox"/>
<b>Allen, Tracey</b> Safety Monitor/Alt: Allen/Flanagan		Nurse Manager - CRC 211 Noll Lab 814-865-5811	Accounted For <input type="checkbox"/>
<b>Appleton, Elizabeth</b> Safety Monitor/Alt: Slimak/Pierzga	UG Office Ph	Volunteer 206 Noll Lab 814-867-2510	Accounted For <input type="checkbox"/>
<b>Aurigemma, Nicole</b> Safety Monitor/Alt: Bingham/Alexander		Graduate Student 115 Noll Lab Office Ph	Accounted For <input type="checkbox"/>
<b>Balantekin, Katherine</b> Safety Monitor/Alt: Reid/Marini		Grad Student - CCOR 223 Noll Lab Office Ph	Accounted For <input type="checkbox"/>
<b>Barrett, Megan</b> Safety Monitor/Alt: Slimak/Pierzga	GA Office Ph	Graduate Student 201 Noll Lab 814-863-3182	Accounted For <input type="checkbox"/>
<b>Bingham, Ellen</b> Safety Monitor/Alt: Bingham/Alexander	FT1 Office Ph	Research Technologist 116 Noll Lab 814-865-4456	Accounted For <input type="checkbox"/>
<b>Bleser, Julia</b> Safety Monitor/Alt: Reid/Marini		Grad Student - CCOR 130A Noll Lab Office Ph	Accounted For <input type="checkbox"/>
<b>Borromeo, Eliza</b> Safety Monitor/Alt: Bingham/Alexander	UG Office Ph	Volunteer 110 Noll Lab 814-863-4488	Accounted For <input type="checkbox"/>
<b>Bosha, Phil</b> Safety Monitor/Alt: Allen/Flanagan		MD - Staff Doctor - CRC 222 Noll Lab 814-863-5929	Accounted For <input type="checkbox"/>
<b>Burke, Gary</b> Safety Monitor/Alt: Bingham/Alexander	UG Office Ph	Volunteer 110 Noll Lab 814-863-4488	Accounted For <input type="checkbox"/>
<b>Celender, Alexis A.</b> Safety Monitor/Alt: Bingham/Alexander	UG Office Ph	Undergrad 110 Noll Lab 814-863-4488	Accounted For <input type="checkbox"/>
<b>Ciccarella, Amy</b> Safety Monitor/Alt: Allen/Flanagan		Dietary Manager - CRC 016 Noll Lab 814-865-8228	Accounted For <input type="checkbox"/>
<b>Clinger, Karen</b> Safety Monitor/Alt: Allen/Flanagan		RN - CRC 211 Noll Lab 814-865-7103	Accounted For <input type="checkbox"/>

## Noll Lab - Kinesiology Emergency Evacuation List

<b>Craighead, Daniel</b> Safety Monitor/Alt: Slimak/Pierzga	GA Office Ph	Graduate Student 229 Noll Lab 814-863-8557	Accounted For <input type="checkbox"/>
<b>DeSouza, Mary Jane</b> Safety Monitor/Alt: McCullough/Ripka	STN Office Ph	Professor 104 Noll Lab 814-863-0045	Accounted For <input type="checkbox"/>
<b>Etter, Clara</b> Safety Monitor/Alt: Slimak/Pierzga	UG Office Ph	Volunteer 206 Noll Lab 814-867-2510	Accounted For <input type="checkbox"/>
<b>Ferrucci, Briana</b> Safety Monitor/Alt: Bingham/Alexander	UG Office Ph	Volunteer 110 Noll Lab 814-863-4488	Accounted For <input type="checkbox"/>
<b>Flanagan, Cyndi</b> Safety Monitor/Alt: Allen/Flanagan		RN - CRC 211 Noll Lab 814-865-7103	Accounted For <input type="checkbox"/>
<b>Garvin, Alexandra (Bobbie)</b> Safety Monitor/Alt: Bingham/Alexander	GA Office Ph	Predoc Fellow (Physio) 115 Noll Lab 814-863-2140	Accounted For <input type="checkbox"/>
<b>Garvin, Nathan</b> Safety Monitor/Alt: Slimak/Pierzga	GA Office Ph	Grad Student (Physio) 227 Noll Lab 814-865-0476	Accounted For <input type="checkbox"/>
<b>Greaney, Jody</b> Safety Monitor/Alt: Slimak/Pierzga	SCH Office Ph	Postdoctoral Fellow 226 Noll Lab 814-865-1235	Accounted For <input type="checkbox"/>
<b>Hess, Lindsey</b> Safety Monitor/Alt: Reid/Marini		Research Tech - CCOR 129 Noll Lab 814-865-2457	Accounted For <input type="checkbox"/>
<b>Hickey, Kathryn (Katie)</b> Safety Monitor/Alt: Bingham/Alexander	UG Office Ph	Volunteer 110 Noll Lab 814-863-4488	Accounted For <input type="checkbox"/>
<b>Hohman, Emily</b> Safety Monitor/Alt: Reid/Marini		Research Technologist 129 Noll Lab 814-865-5246	Accounted For <input type="checkbox"/>
<b>Kenney, W. Larry</b> Safety Monitor/Alt: McCullough/Ripka	STN Office Ph	Professor 102 Noll Lab 814-863-1672	Accounted For <input type="checkbox"/>
<b>Kim, Jin-Kwang (Dani)</b> Safety Monitor/Alt: Slimak/Pierzga		Grad Student (Physio) 201 Noll Lab 814-863-3182	Accounted For <input type="checkbox"/>
<b>Koehler, Karsten</b> Safety Monitor/Alt: Bingham/Alexander	VIS Office Ph	Visiting Scholar 123 Noll Lab 814-867-2294	Accounted For <input type="checkbox"/>
<b>Korzick, Donna H.</b> Safety Monitor/Alt: McCullough/Ripka	STN Office Ph	Professor 106 Noll Lab 814-865-5679	Accounted For <input type="checkbox"/>
<b>Kutz, Jessica</b> Safety Monitor/Alt: Slimak/Pierzga	GA Office Ph	Graduate Student 229 Noll Lab 814-863-8557	Accounted For <input type="checkbox"/>

**CONFIDENTIAL**

Printed 3/31/2015

**Noll Lab - Kinesiology Emergency Evacuation List**

<b>Leshner, Teresa</b> Safety Monitor/Alt: Reid/Marini	UG Office Ph	CCOR 129 Noll Lab 814-865-9096	Accounted For <input type="checkbox"/>
<b>Lieberman, Jay</b> Safety Monitor/Alt: Bingham/Alexander	GA Office Ph	Graduate Student 109 Noll Lab 814-865-9096	Accounted For <input type="checkbox"/>
<b>Mallinson, Rebecca</b> Safety Monitor/Alt: Slimak/Pierzga	SCH Office Ph	Postdoctoral Scholar 206 Noll Lab 814-867-2510	Accounted For <input type="checkbox"/>
<b>Marini, Michele</b> Safety Monitor/Alt: Reid/Marini	Office Ph	Research Tech - CCOR 129 Noll Lab 814-863-0607	Accounted For <input type="checkbox"/>
<b>Martin, Phyllis</b> Safety Monitor/Alt: Allen/Flanagan	Office Ph	RN - CRC 211 Noll Lab 814-865-7103	Accounted For <input type="checkbox"/>
<b>McCullough, Randall (Randy)</b> Safety Monitor/Alt: McCullough/Ripka	STN Office Ph	Research Technologist 001A Noll Lab 814-865-0289	Accounted For <input type="checkbox"/>
<b>Millard, Roberta (Bobbi)</b> Safety Monitor/Alt: Allen/Flanagan	Office Ph	MD - Medical Dir - CRC 222 Noll Lab 814-863-5929	Accounted For <input type="checkbox"/>
<b>Mooney, Robert</b> Safety Monitor/Alt: Allen/Flanagan	Office Ph	MD - Research Advocate - CRC 012 Noll Lab 814-865-7787	Accounted For <input type="checkbox"/>
<b>Moore, Dave</b> Safety Monitor/Alt: Slimak/Pierzga	GA Office Ph	Grad Student (Physio) 201 Noll Lab 814-863-3182	Accounted For <input type="checkbox"/>
<b>Nader, Gustavo</b> Safety Monitor/Alt: McCullough/Ripka	STN Office Ph	Assoc Professor 101 Noll Lab 814-867-6153	Accounted For <input type="checkbox"/>
<b>Pauley, Abigail (Abbie)</b> Safety Monitor/Alt: Slimak/Pierzga	FT1 Office Ph	Research Technologist 223 Noll Lab 814-863-7354	Accounted For <input type="checkbox"/>
<b>Pawelczyk, James A.</b> Safety Monitor/Alt: McCullough/Ripka	STN Office Ph	Assoc Professor 107 Noll Lab 814-863-5792	Accounted For <input type="checkbox"/>
<b>Petkus, Dylan</b> Safety Monitor/Alt: Bingham/Alexander	Office Ph	Grad Student (Physio) 109 Noll Lab 814-865-9096	Accounted For <input type="checkbox"/>
<b>Pierzga, Jane</b> Safety Monitor/Alt: Slimak/Pierzga	FT1 Office Ph	Research Assistant 224B Noll Lab 814-865-1236	Accounted For <input type="checkbox"/>
<b>Proctor, David N.</b> Safety Monitor/Alt: McCullough/Ripka	STN Office Ph	Professor 105 Noll Lab 814-863-0724	Accounted For <input type="checkbox"/>
<b>Reid, Joy</b> Safety Monitor/Alt: Reid/Marini	Office Ph	Research Technologist 129 Noll Lab 814-865-5246	Accounted For <input type="checkbox"/>



**CONFIDENTIAL**

Printed 3/31/2015

**Noll Lab - Kinesiology Emergency Evacuation List**

<b>Ripka, Dennis (Denny)</b> Safety Monitor/Alt: McCullough/Ripka	STN    Engrg Support Spec 001B Noll Lab Office Ph    814-863-9263	Accounted For <input type="checkbox"/>
<b>Rodden, Kathleen (Katie)</b> Safety Monitor/Alt: Bingham/Alexander	UG    Undergrad 110 Noll Lab Office Ph    814-863-4488	Accounted For <input type="checkbox"/>
<b>Rollins, Brandi</b> Safety Monitor/Alt: Reid/Marini	Research Tech - CCOR 129 Noll Lab Office Ph    814-865-5245	Accounted For <input type="checkbox"/>
<b>Slimak, Susan</b> Safety Monitor/Alt: Slimak/Pierzga	FT1    Nursing Specialist 228 Noll Lab Office Ph    814-863-8556	Accounted For <input type="checkbox"/>
<b>Southmayd, Emily</b> Safety Monitor/Alt: Bingham/Alexander	GA    Graduate Student 109 Noll Lab Office Ph    814-865-9096	Accounted For <input type="checkbox"/>
<b>Stanhewicz, Anna</b> Safety Monitor/Alt: Slimak/Pierzga	SCH    Postdoc Scholar - CHA 226 Noll Lab Office Ph    814-865-1235	Accounted For <input type="checkbox"/>
<b>Tzilkowski, Angela</b> Safety Monitor/Alt: Reid/Marini	Research Technologist 129 Noll Lab Office Ph    814-863-9794	Accounted For <input type="checkbox"/>
<b>Williams, Jennifer Savage</b> Safety Monitor/Alt: Reid/Marini	Assoc Director - CCOR 129A Noll Lab Office Ph    814-865-0514	Accounted For <input type="checkbox"/>

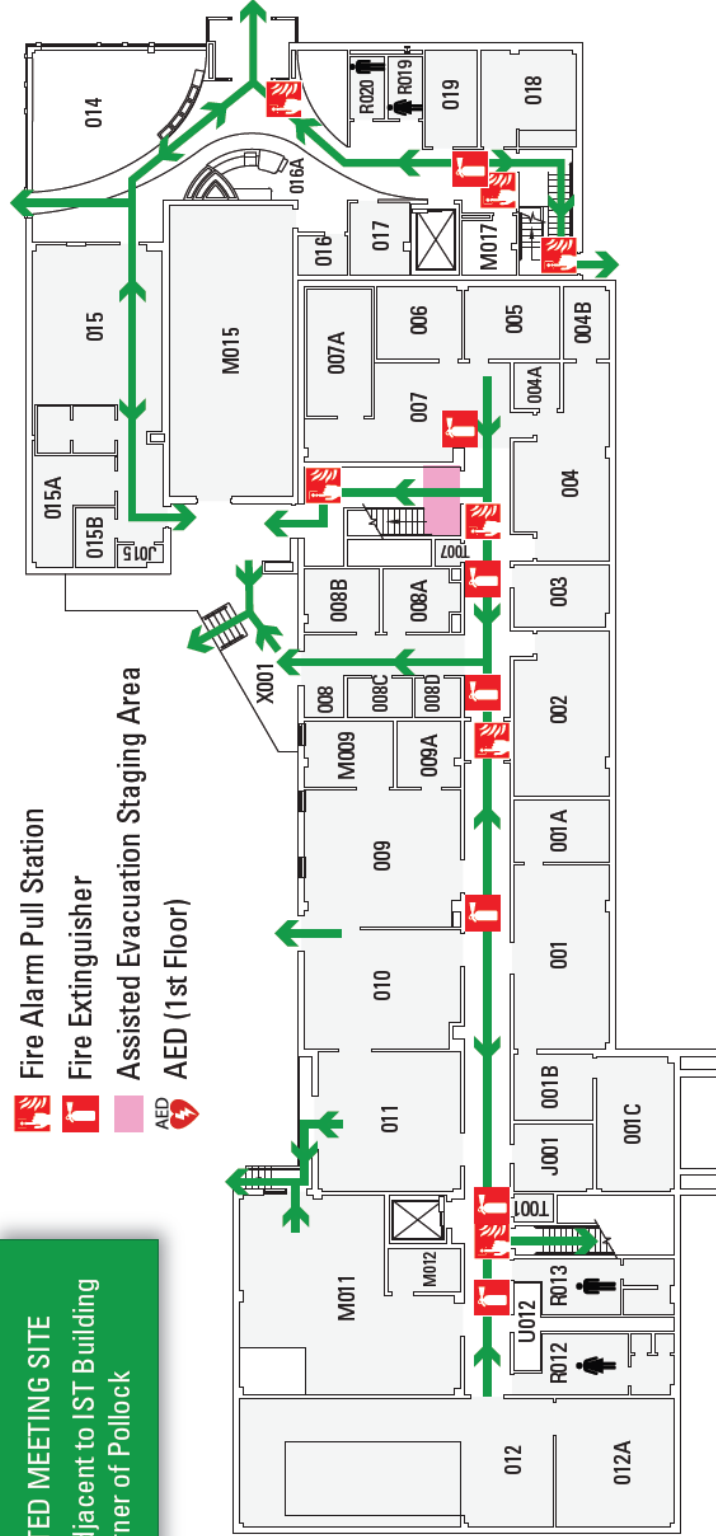
**Appendix II**  
**Building Evacuation Floor Plan (see pages 13-15)**



# EVACUATION ROUTE

## DESIGNATED MEETING SITE

Grass area adjacent to IST Building  
at corner of Pollock



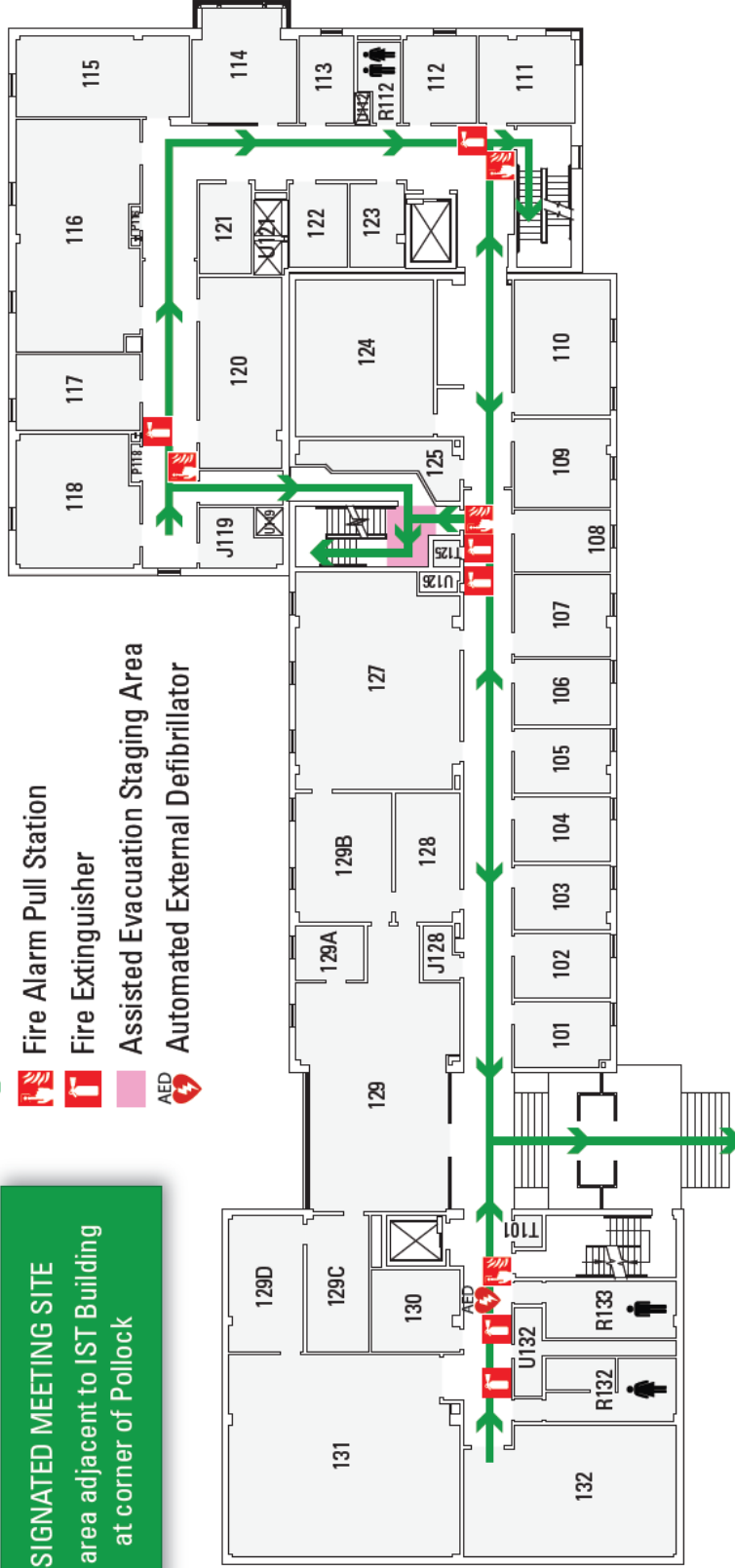


# EVACUATION ROUTE

## DESIGNATED MEETING SITE

Grass area adjacent to IST Building  
at corner of Pollock

- Exit Route
- Fire Alarm Pull Station
- Fire Extinguisher
- Assisted Evacuation Staging Area
- Automated External Defibrillator

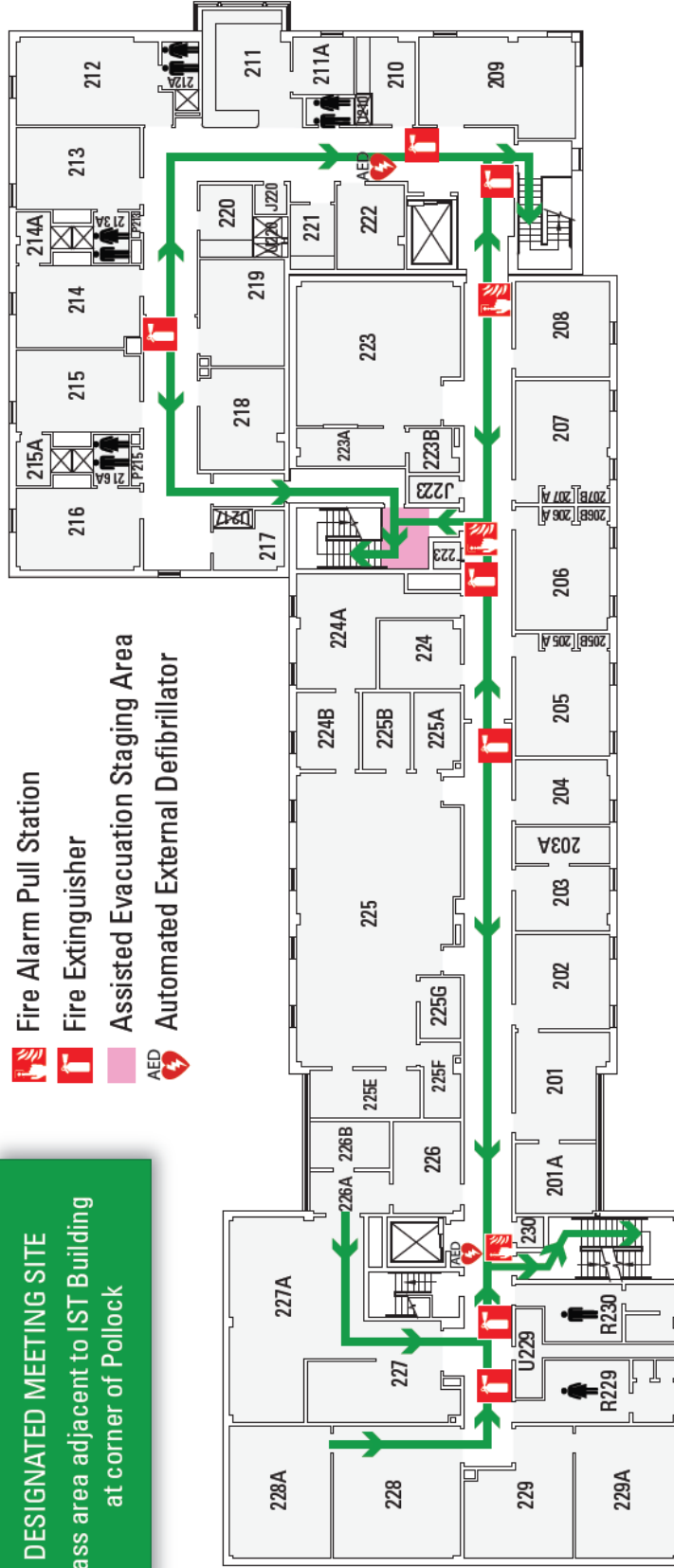




# EVACUATION ROUTE

**DESIGNATED MEETING SITE**  
Grass area adjacent to IST Building  
at corner of Pollock

- Exit Route
- Fire Alarm Pull Station
- Fire Extinguisher
- Assisted Evacuation Staging Area
- AED
- Automated External Defibrillator



## Noll Laboratory - 2nd Floor

# Appendix III

## Evacuation Quick Reference Card

(Sample)

**Emergency Contacts:**

911 (Police- Fire –Ambulance)  
University Police: 863-1111  
Environmental Health and Safety: 865-6391  
OPP Work Reception Center: 865-4731

**Evacuation Contacts:**

Bldg / Dept Emergency Coordinator: Randy McCullough (W)865-0289; (C)814-321-8436  
Safety Monitor:\_\_\_\_\_

**Work Unit Name**

Evacuation Quick Reference

- Quickly exit in a calm manner.
- Close doors – **Do Not** lock
- Assist visitors to evacuate
- **Do Not** use elevators
- Report to designated meeting site
- **Do Not** reenter the building until advised by emergency personnel or safety monitor

**Noll Lab** designated meeting site: grassy area outside IST Bldg at intersection of Burrowes & Pollock Rds.

Original Document – Sept 2007

Edit – October 2008 (Assisted Evacuation Staging Area)

Edit – May 2010 (Additional Evac. Map Example)

(You are Here Sticker)

Edit – Dec 2010 Revised Evacuation Map

Edit – Jan 2013 SO Roles, Appendix II, Plan Preparation

Edit – March 2015 Safety Monitors and Employee Lists