



SEP 14



The effect of acute and chronic spice consumption on inflammatory responses in overweight or obese adults at risk for cardiovascular disease

Ester Oh, PhD Candidate

Advisor: Connie Rogers, PhD

OCT 26



From policy to practice: Promoting healthy beverages in early childhood

Caree J. Cotwright, PhD, RDN, LD

Assistant Professor, Foods and Nutrition, College of Family and Consumer Sciences, University of Georgia

SEP 21



The weight of work: An investigation of the relationship between employment and overweight

Vanessa M. Oddo, PhD, MPH

Assistant Professor, Department of Kinesiology and Nutrition, University of Illinois Chicago

NOV 02



Modern stressors of the host—microbiota relationship

Benoit Chassaing, PhD, HDR

Team leader, Mucosal microbiota in chronic inflammatory diseases, INSERM U1016, Paris, France

SEP 28



Low-cost sensing technologies to monitor micronutrients in fortified foods

Juan E. Andrade, PhD

Associate Professor of Global Nutrition, Department of Food Science and Human Nutrition, University of Florida

NOV 09



Oxylipins and their complex metabolites as key regulators of blood clotting and innate immunity

Valerie O'Donnell, PhD

Director, Division of Infection and Immunity & Co-Director of Systems Immunity Research Institute, Cardiff University, Cardiff, UK

OCT 05



Impact of whole egg consumption on the obese phenotype

Kevin Schalinske, PhD

Professor, Department of Food Science and Human Nutrition, Iowa State University

NOV 16

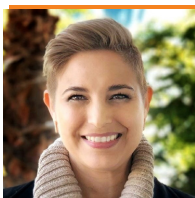


Addressing pediatric iron deficiency in areas where infection is common

Sarah Cusick, PhD

Assistant Professor Department of Pediatrics, University of Minnesota

OCT 12



Ruth Pike Lecture:

Vitamin A status and the use of nuclear techniques

Veronica Lopez-Teros, DSc

Research Professor, University of Sonora

NOV 30



How vitamins and sex influence the immune response toward pathogens and vaccines

Julia L. Hurwitz, PhD

Infectious Diseases Department, St. Jude Children's Research Hospital, TN

OCT 19



Promoting healthier eating among children in restaurants using evidence-based approaches from the behavioral sciences

Stephanie Anzman-Frasca, PhD

Assistant Professor of Pediatrics, University at Buffalo

DEC 07



Assessing feeding and eating in diverse populations with diverse methods

Charissa Cheah, PhD

Professor, Department of Psychology, University of Maryland Baltimore County